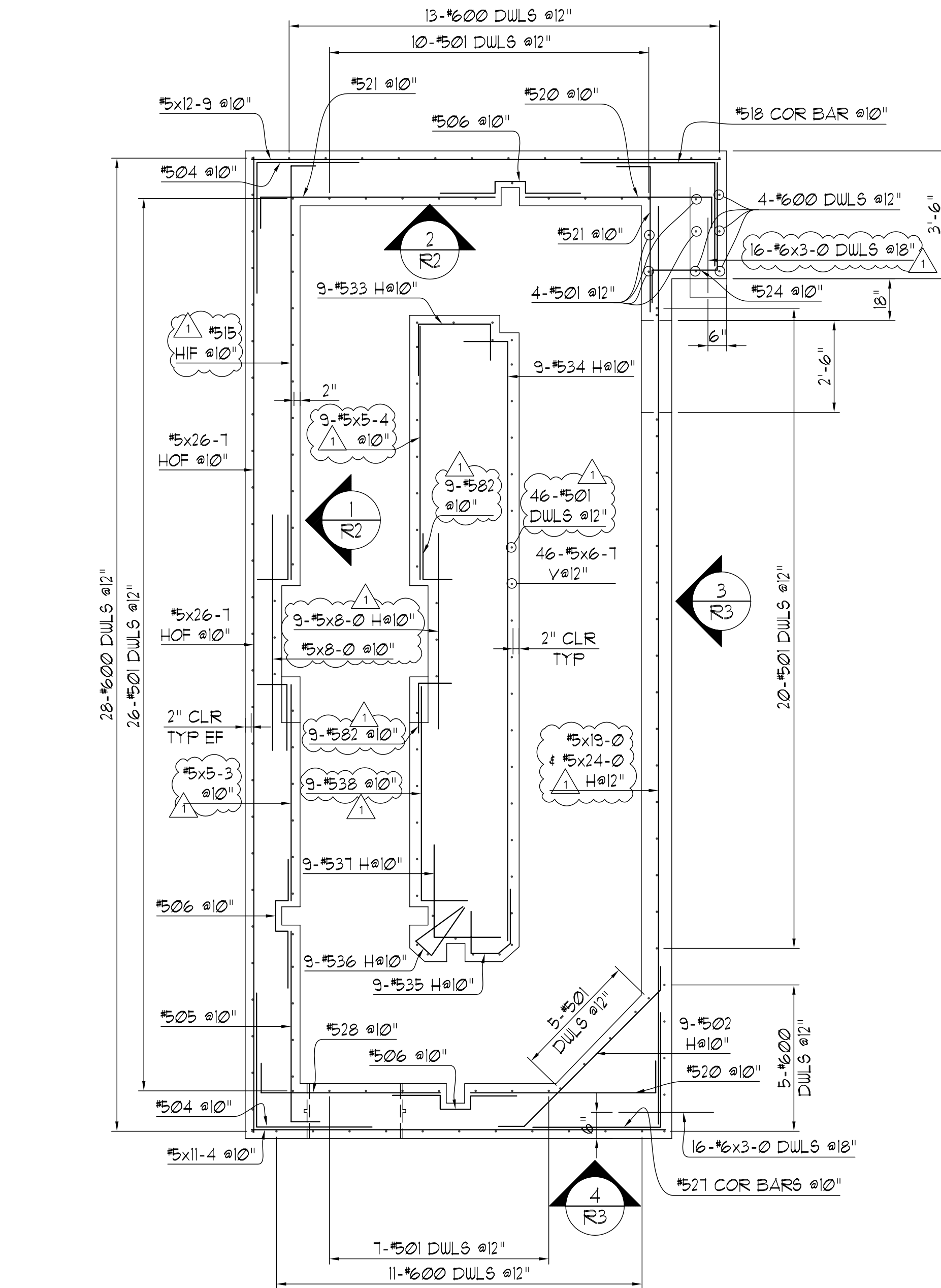
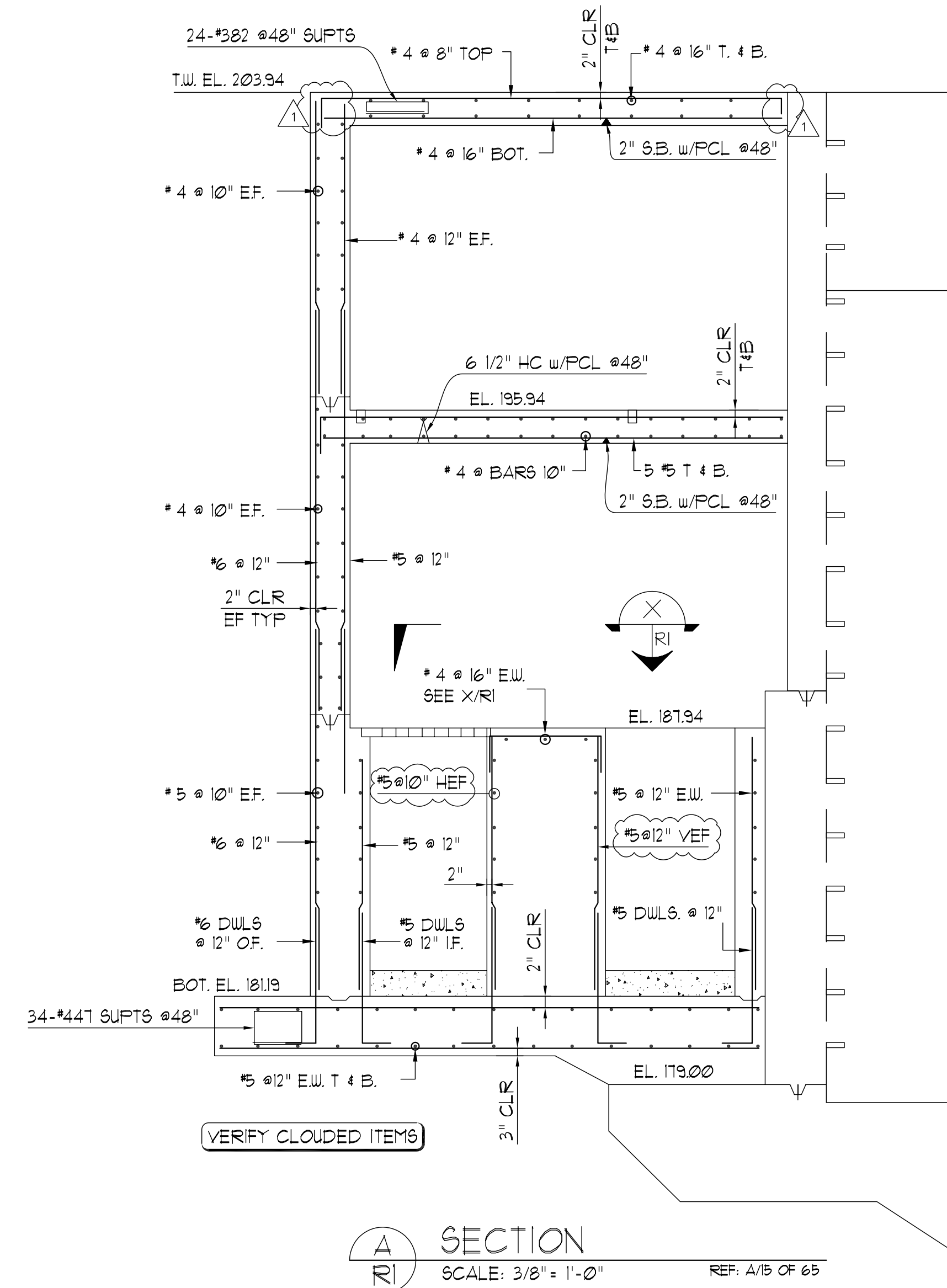


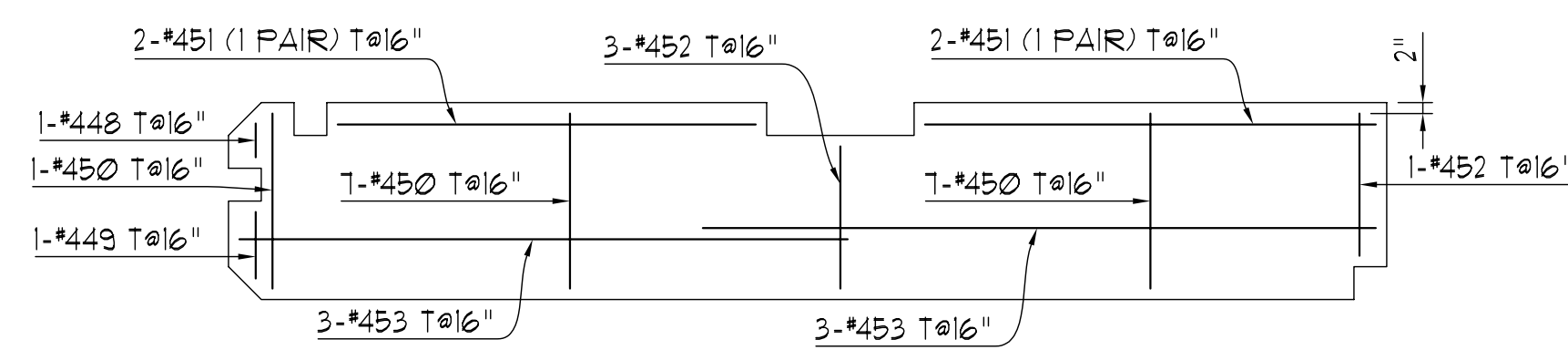
RAW SEWAGE PUMP STATION BAS SLAB (181.19')  
SCALE: 3/8" = 1'-0" REF: 11-17 OF 65



WALL DOWEL LAYOUT & HORIZ PLAN BELOW 187.94'  
SCALE: 3/8" = 1'-0" REF: 11-17 OF 65



SECTION A-R1  
SCALE: 3/8" = 1'-0" REF: A/15 OF 65



CENTER WALL TOP PLAN  
SCALE: 3/8" = 1'-0" REF: 11-17 OF 65

TOTAL BAR SUPPORTS  
100 LF 2" S.B. w/PCL  
10 PCS 6 1/2" H.C. w/PCL  
24 PCS 7" H.C. w/PCL

SEE R4 FOR BENT BAR DETAILS

THESE REINFORCING SHOP DRAWINGS ARE PREPARED IN ACCORDANCE WITH ACI DETAILING MANUAL, THE FIRST MANUAL OF STANDARD PRACTICE, AND THE CONTRACT DOCUMENTS. THE CONTRACT DRAWINGS AND SPECIFICATIONS ARE THE PRIMARY DOCUMENTS AND ARE TO BE USED TOGETHER WITH THE REBAR SHOP DRAWINGS FOR THE ACTUAL PLACEMENT OF REINFORCING STEEL.

DATE	REVISION	DESCRIPTION	PER APPROVAL	DATE	REVISION	DESCRIPTION	PER APPROVAL
6/4/03	1	PER APPROVAL					
				TYPICAL LAPS			
				#3	14"	#8	36"
				#4	18"	#9	41"
				#5	23"	#10	46"
				#6	27"	#11	51"
				#7	32"		
				ALL VERIFIES WILL BE ASSURED CORRECT IF THEY ARE NOT ADDRESSED ON THE APPROVAL DRAWING			
				PROJECT: LITTLE RIVER WATER POLLUTION CONTROL PLANT			
				LOCATION: COLUMBIA COUNTY, GEORGIA			
				CUSTOMER: HOLT & MAHONE			
				ENGINEER: G. BEN TURNIPSEED ENGINEERS			
				JOB NUMBER			
				MOD TO RAW SEWAGE PUMP STATION BASE SLAB & MISC SECTIONS			
				R1			
				DRAWING NUMBER			

NOTE: THIS DRAWING IS TO BE USED FOR REINFORCING STEEL PLACEMENT ONLY.